

SIGNATURE COLLECTION

# OLD FOREST HILL 416

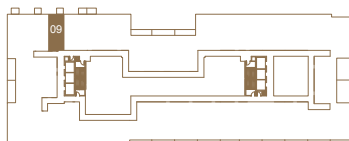
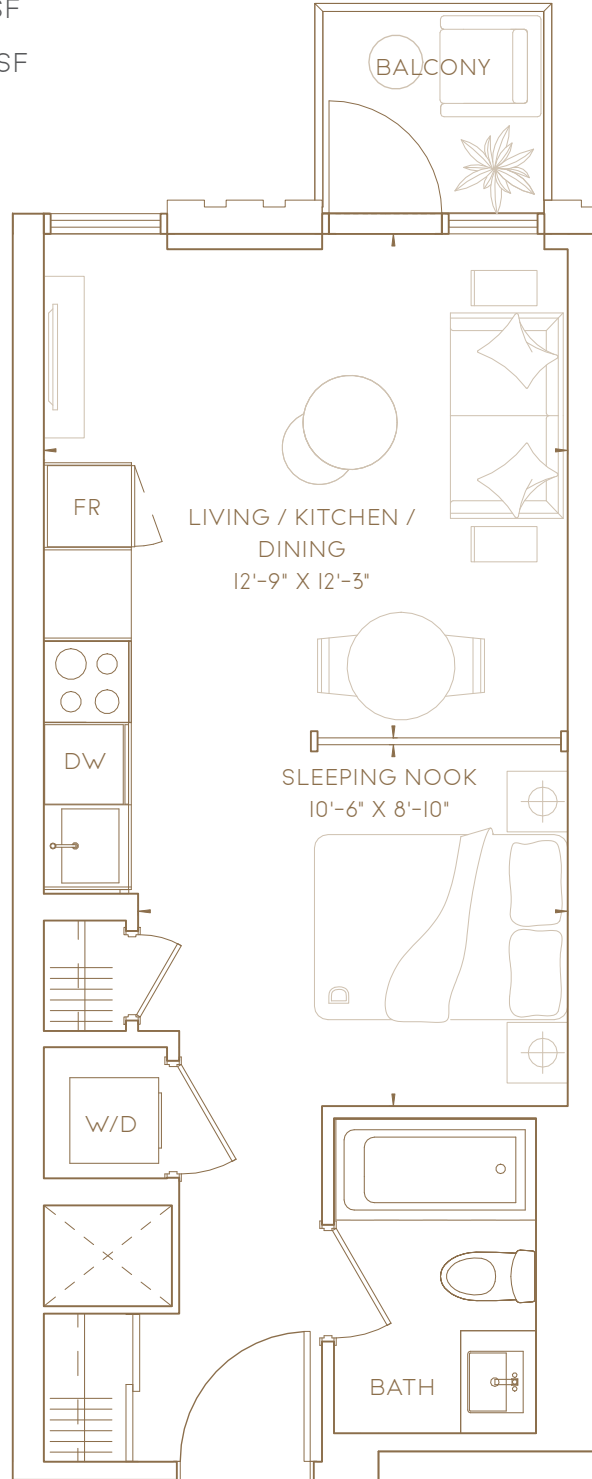
S O U T H  
F O R E S T  
H I L L  
R E S I D E N C E S

JR. 1 BEDROOM

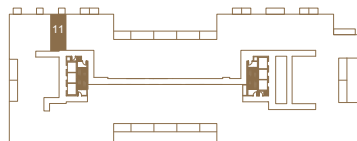
INTERIOR LIVING AREA 416 SF

OUTDOOR LIVING AREA 25 SF

**TOTAL LIVING AREA 441 SF**



LOWER TOWER | LEVEL 3



LOWER TOWER | LEVEL 5-7



This plan is not to scale and is subject to architectural review and revision. All details are approximate and subject to change without notice in order to comply with building site conditions and municipal, structural, architectural and/or Vendor requirements. Balconies and/or terraces, if any, are exclusive use common elements, shown for display purposes only and location, size and design of such are subject to change without notice. Floor levels correspond to the proposed municipal levels and do not include levels 4, 13, 14, 24. Actual unit and/or balcony and/or terrace may be a reverse mirror image of the plan presented. Units may include bulkheads, angled windows and/or angled columns. The location, size and type of windows, view treatments (including frit patterning, mullion/metal panel placement or other visual treatments) and exterior building elements may vary without notice. Suites are sold unfurnished. All illustrations are artist concept only. E. & O.E.



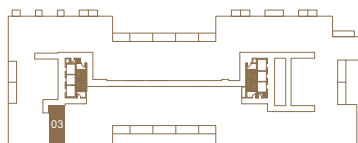
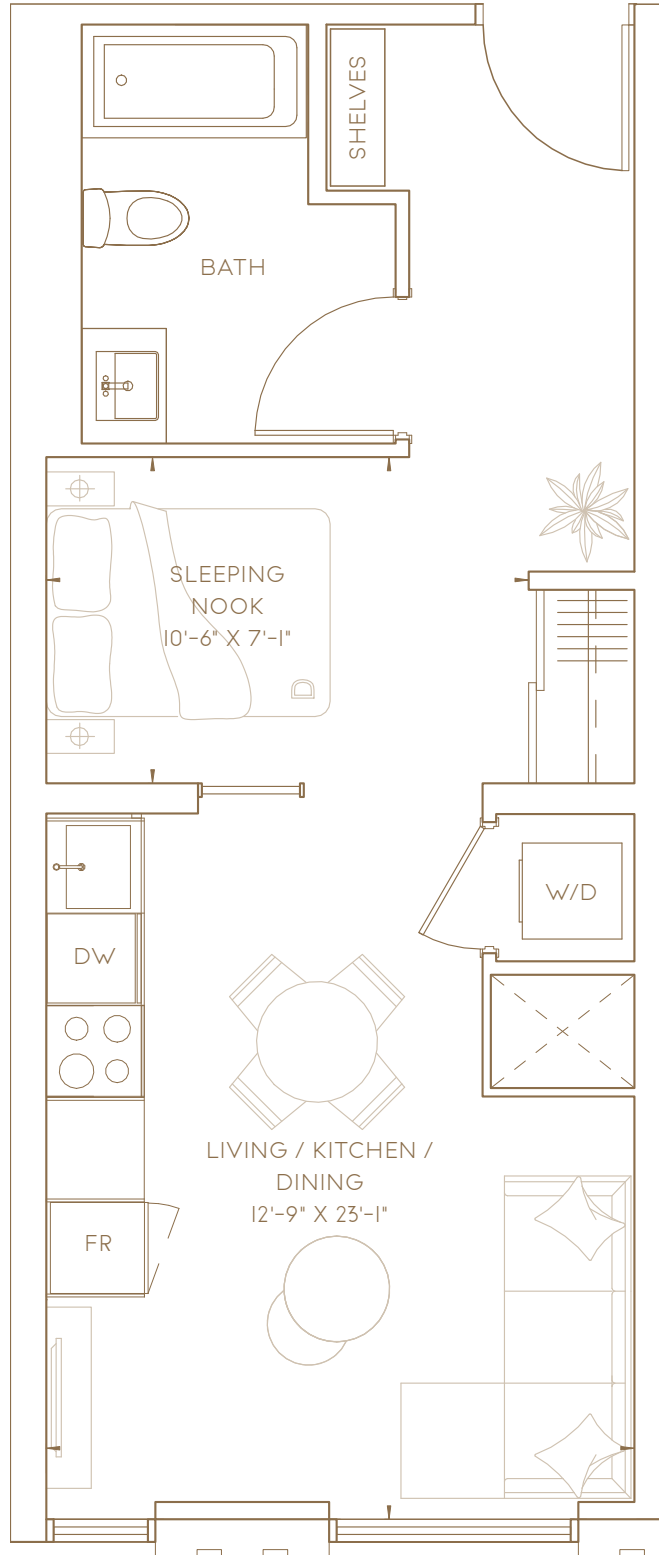
SIGNATURE COLLECTION

# OLD FOREST HILL 457

S O U T H  
F O R E S T  
H I L L  
R E S I D E N C E S

JR. 1 BEDROOM

**TOTAL LIVING AREA 457 SF**



LOWER TOWER | LEVEL 5-7



This plan is not to scale and is subject to architectural review and revision. All details are approximate and subject to change without notice in order to comply with building site conditions and municipal, structural, architectural and/or Vendor requirements. Balconies and/or terraces, if any, are exclusive use common elements shown for display purposes only and location, size and design of such are subject to change without notice. Floor levels correspond to the proposed municipal levels and do not include levels 4, 13, 14, 24. Actual unit and/or balcony and/or terrace may be a reverse mirror image of the plan presented. Units may include bulkheads, angled windows and/or angled columns. The location, size and type of windows, view treatments (including frit patterning, mullion/metal panel placement or other visual treatments) and exterior building elements may vary without notice. Suites are sold unfurnished. All illustrations are artist concept only. E. & O.E.



SIGNATURE COLLECTION

# MONTCLAIR 480

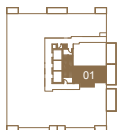
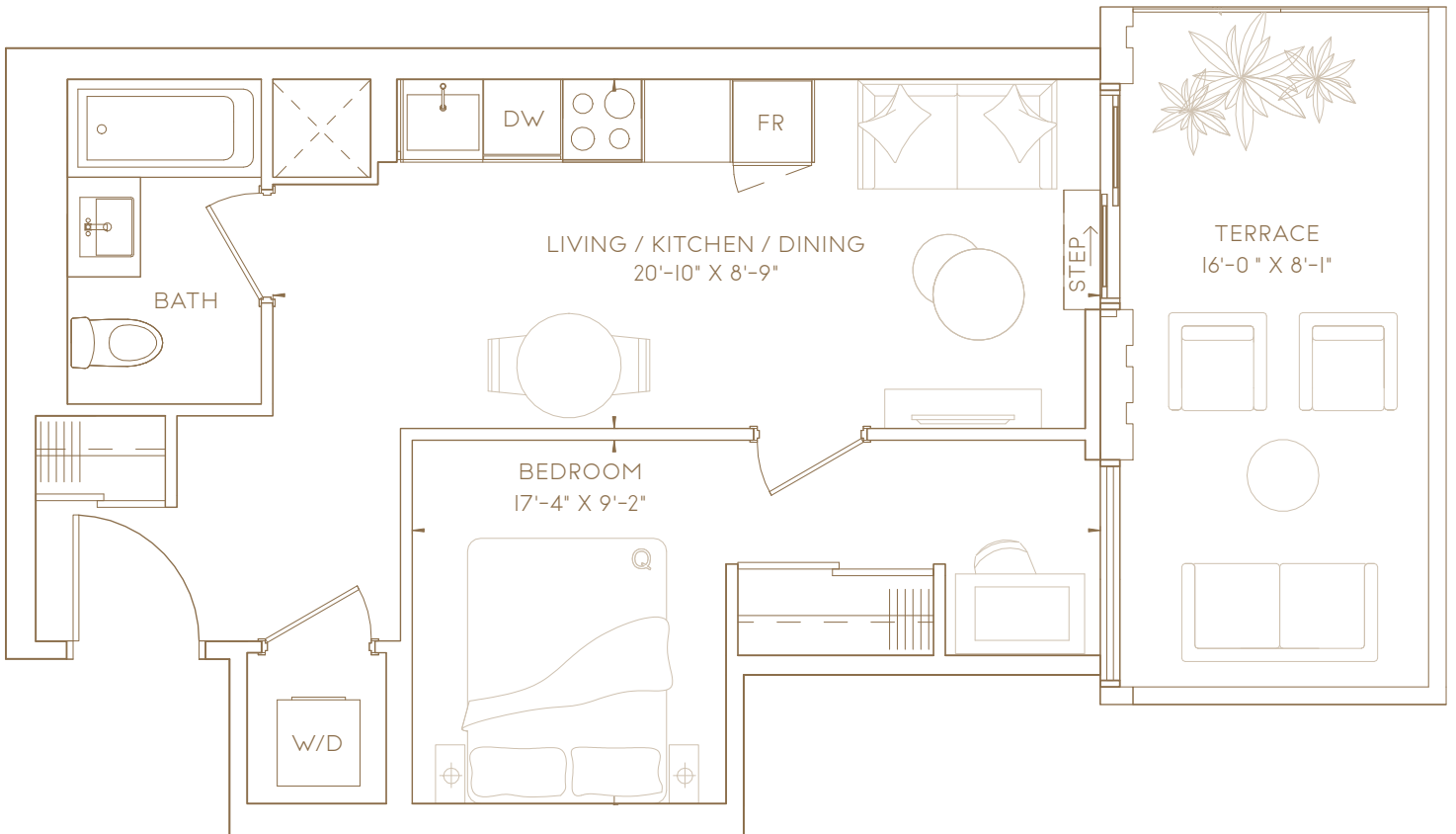
S O U T H  
F O R E S T  
H I L L  
R E S I D E N C E S

1 BEDROOM

INTERIOR LIVING AREA 480 SF

OUTDOOR LIVING AREA 130 SF

**TOTAL LIVING AREA 610 SF**



WEST TOWER | LEVEL 9



This plan is not to scale and is subject to architectural review and revision. All details are approximate and subject to change without notice in order to comply with building site conditions and municipal, structural, architectural and/or Vendor requirements. Balconies and/or terraces, if any, are exclusive use common elements shown for display purposes only and location, size and design of such are subject to change without notice. Floor levels correspond to the proposed municipal levels and do not include levels 4, 13, 14, 24. Actual unit and/or balcony and/or terrace may be a reverse mirror image of the plan presented. Units may include bulkheads, angled windows and/or angled columns. The location, size and type of windows, view treatments (including frit patterning, mullion/metal panel placement or other visual treatments) and exterior building elements may vary without notice. Suites are sold unfurnished. All illustrations are artist concept only. E. & O.E.



SIGNATURE COLLECTION

# MONTCLAIR 483

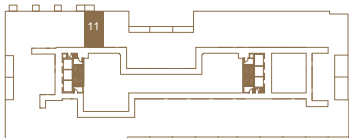
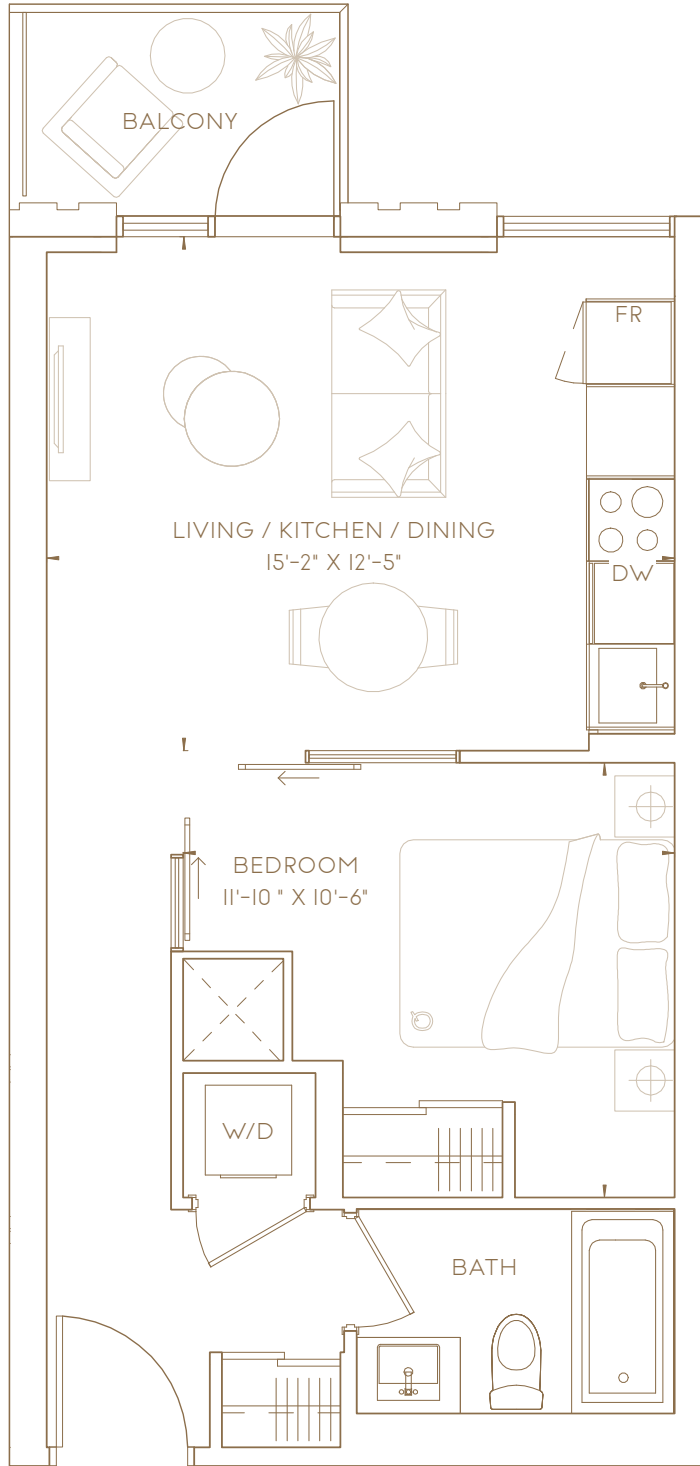
S O U T H  
F O R E S T  
H I L L  
R E S I D E N C E S

1 BEDROOM

INTERIOR LIVING AREA 483 SF

OUTDOOR LIVING AREA 35 SF

**TOTAL LIVING AREA 518 SF**



LOWER TOWER | LEVEL 3



This plan is not to scale and is subject to architectural review and revision. All details are approximate and subject to change without notice in order to comply with building site conditions and municipal, structural, architectural and/or Vendor requirements. Balconies and/or terraces, if any, are exclusive use common elements shown for display purposes only and location, size and design of such are subject to change without notice. Floor levels correspond to the proposed municipal levels and do not include levels 4,13,14,24. Actual unit and/or balcony and/or terrace may be a reverse mirror image of the plan presented. Units may include bulkheads, angled windows and/or angled columns. The location, size and type of windows, view treatments (including frit patterning, mullion/metal panel placement or other visual treatments) and exterior building elements may vary without notice. Suites are sold unfurnished. All illustrations are artist concept only. E. & O.E.



# MONTCLAIR 573

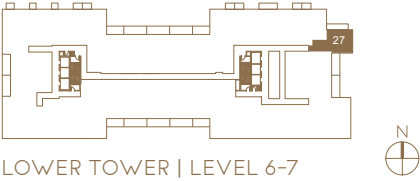
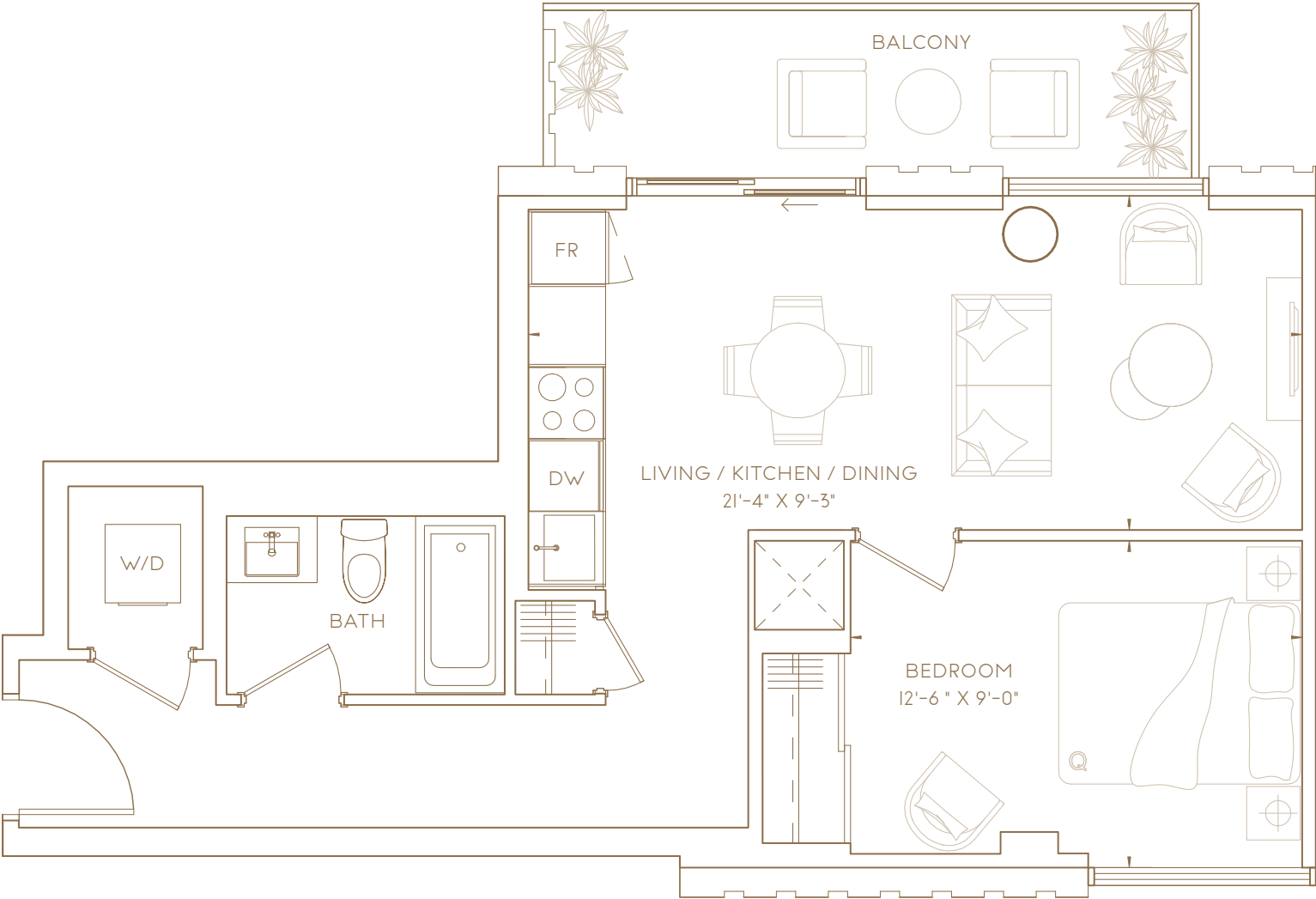
S O U T H  
F O R E S T  
H I L L  
R E S I D E N C E S

1 BEDROOM

INTERIOR LIVING AREA 573 SF

OUTDOOR LIVING AREA 70 SF

**TOTAL LIVING AREA 643 SF**



This plan is not to scale and is subject to architectural review and revision. All details are approximate and subject to change without notice in order to comply with building site conditions and municipal, structural, architectural and/or Vendor requirements. Balconies and/or terraces, if any, are exclusive use common elements shown for display purposes only and location, size and design of such are subject to change without notice. Floor levels correspond to the proposed municipal levels and do not include levels 4,13,14,24. Actual unit and/or balcony and/or terrace may be a reverse mirror image of the plan presented. Units may include bulkheads, angled windows and/or angled columns. The location, size and type of windows, view treatments (including frit patterning, mullion/metal panel placement or other visual treatments) and exterior building elements may vary without notice. Suites are sold unfurnished. All illustrations are artist concept only. E. & O.E.

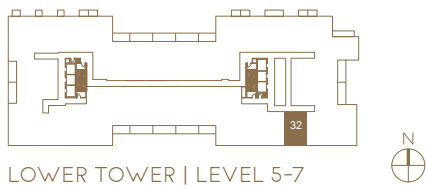
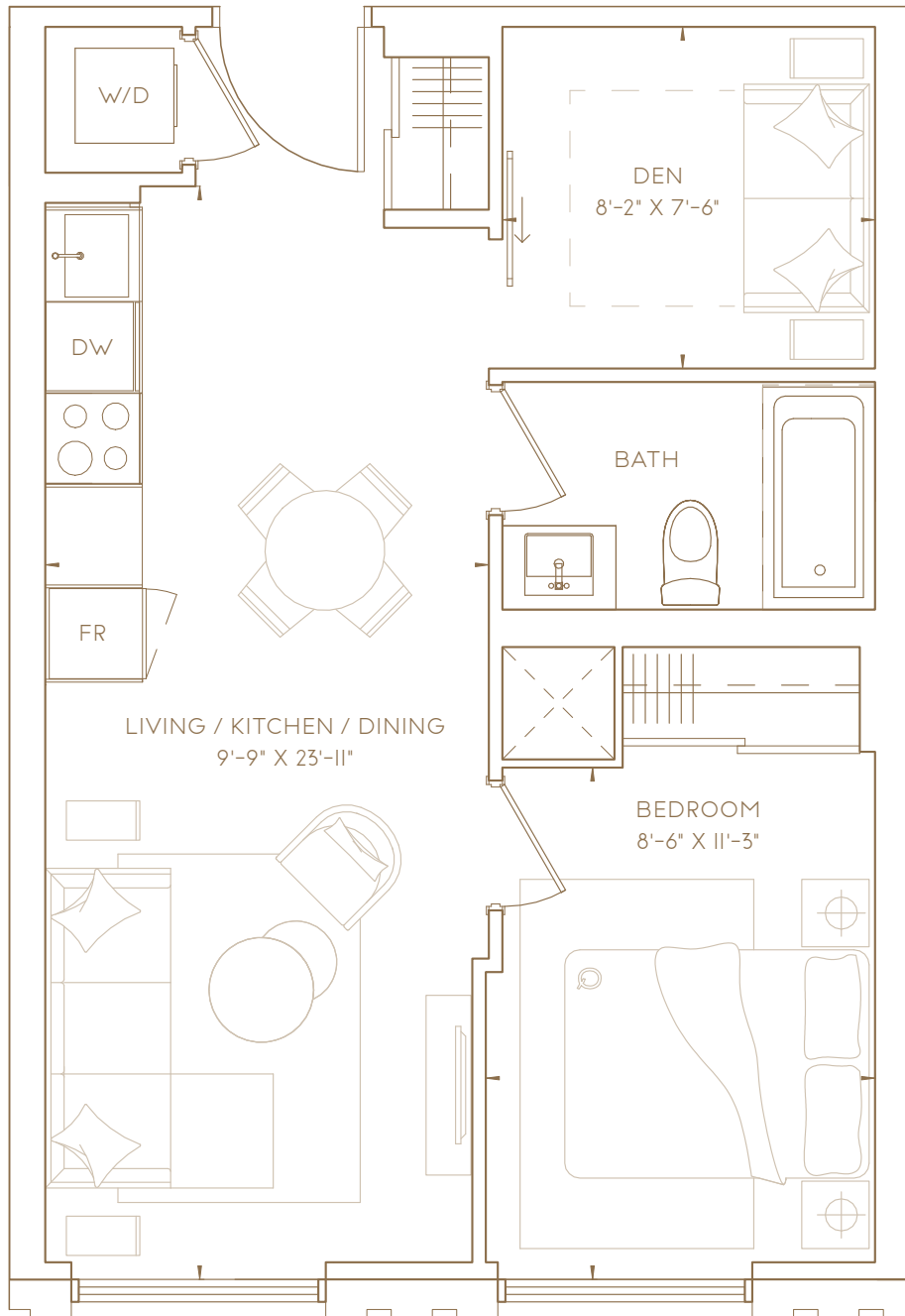
SIGNATURE COLLECTION

# FOREST HILL 540

S O U T H  
F O R E S T  
H I L L  
R E S I D E N C E S

1 BEDROOM + DEN

**TOTAL LIVING AREA 540 SF**



This plan is not to scale and is subject to architectural review and revision. All details are approximate and subject to change without notice in order to comply with building site conditions and municipal, structural, architectural and/or Vendor requirements. Balconies and/or terraces, if any, are exclusive use common elements shown for display purposes only and location, size and design of such are subject to change without notice. Floor levels correspond to the proposed municipal levels and do not include levels 4, 13, 14, 24. Actual unit and/or balcony and/or terrace may be a reverse mirror image of the plan presented. Units may include bulkheads, angled windows and/or angled columns. The location, size and type of windows, view treatments (including frit patterning, mullion/metal panel placement or other visual treatments) and exterior building elements may vary without notice. Suites are sold unfurnished. All illustrations are artist concept only. E. & O.E.

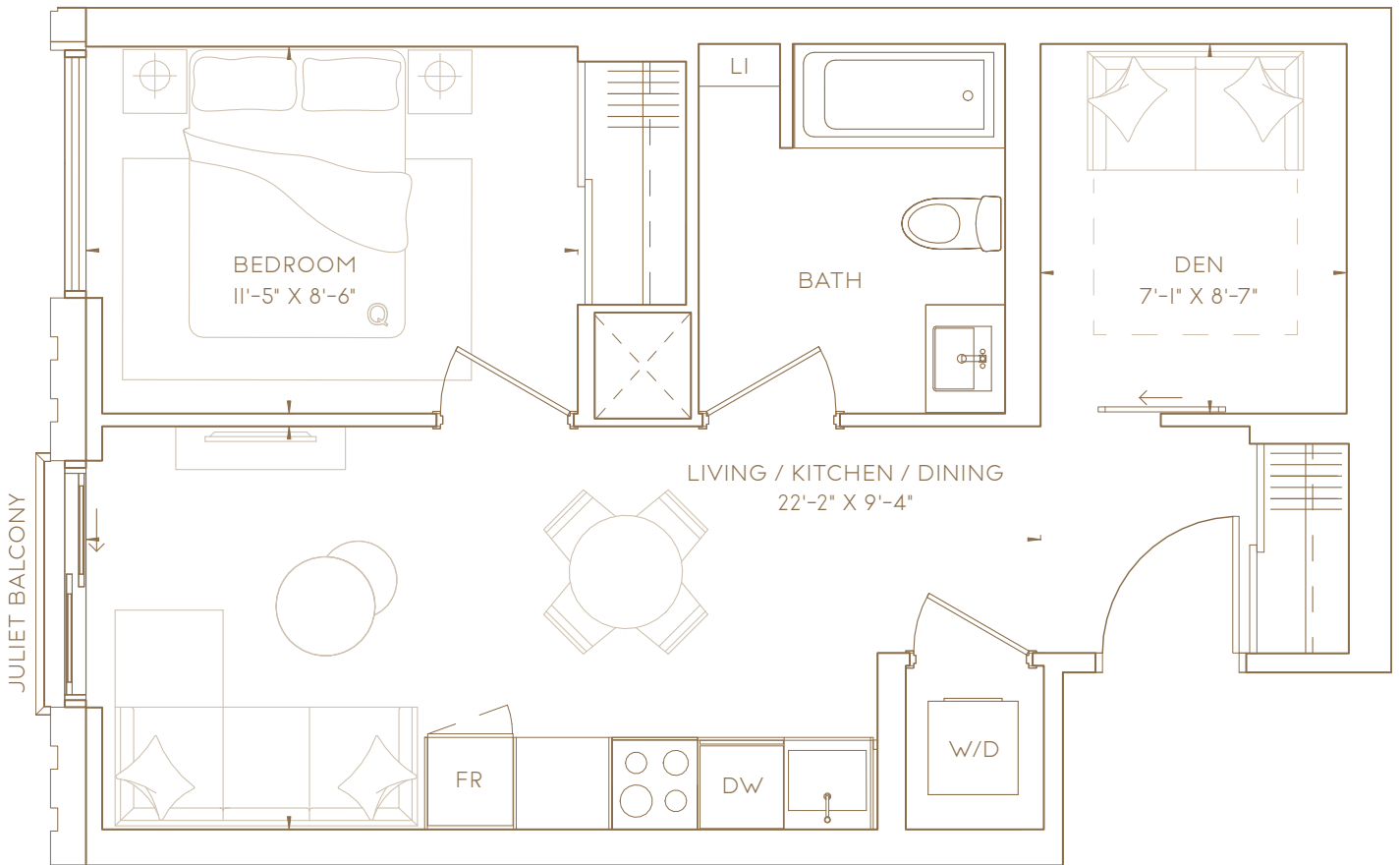
SIGNATURE COLLECTION

# FOREST HILL 555

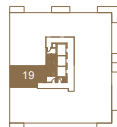
S O U T H  
F O R E S T  
H I L L  
R E S I D E N C E S

1 BEDROOM + DEN

**TOTAL LIVING AREA 555 SF**



EAST TOWER | LEVEL 10-18



EAST TOWER | LEVEL 19-22



This plan is not to scale and is subject to architectural review and revision. All details are approximate and subject to change without notice in order to comply with building site conditions and municipal, structural, architectural and/or Vendor requirements. Balconies and/or terraces, if any, are exclusive use common elements, shown for display purposes only and location, size and design of such are subject to change without notice. Floor levels correspond to the proposed municipal levels and do not include levels 4,13,14,24. Actual unit and/or balcony and/or terrace may be a reverse mirror image of the plan presented. Units may include bulkheads, angled windows and/or angled columns. The location, size and type of windows, view treatments (including frit patterning, mullion/metal panel placement or other visual treatments) and exterior building elements may vary without notice. Suites are sold unfurnished. All illustrations are artist concept only. E. & O.E.



SIGNATURE COLLECTION

# FOREST HILL 555

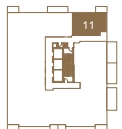
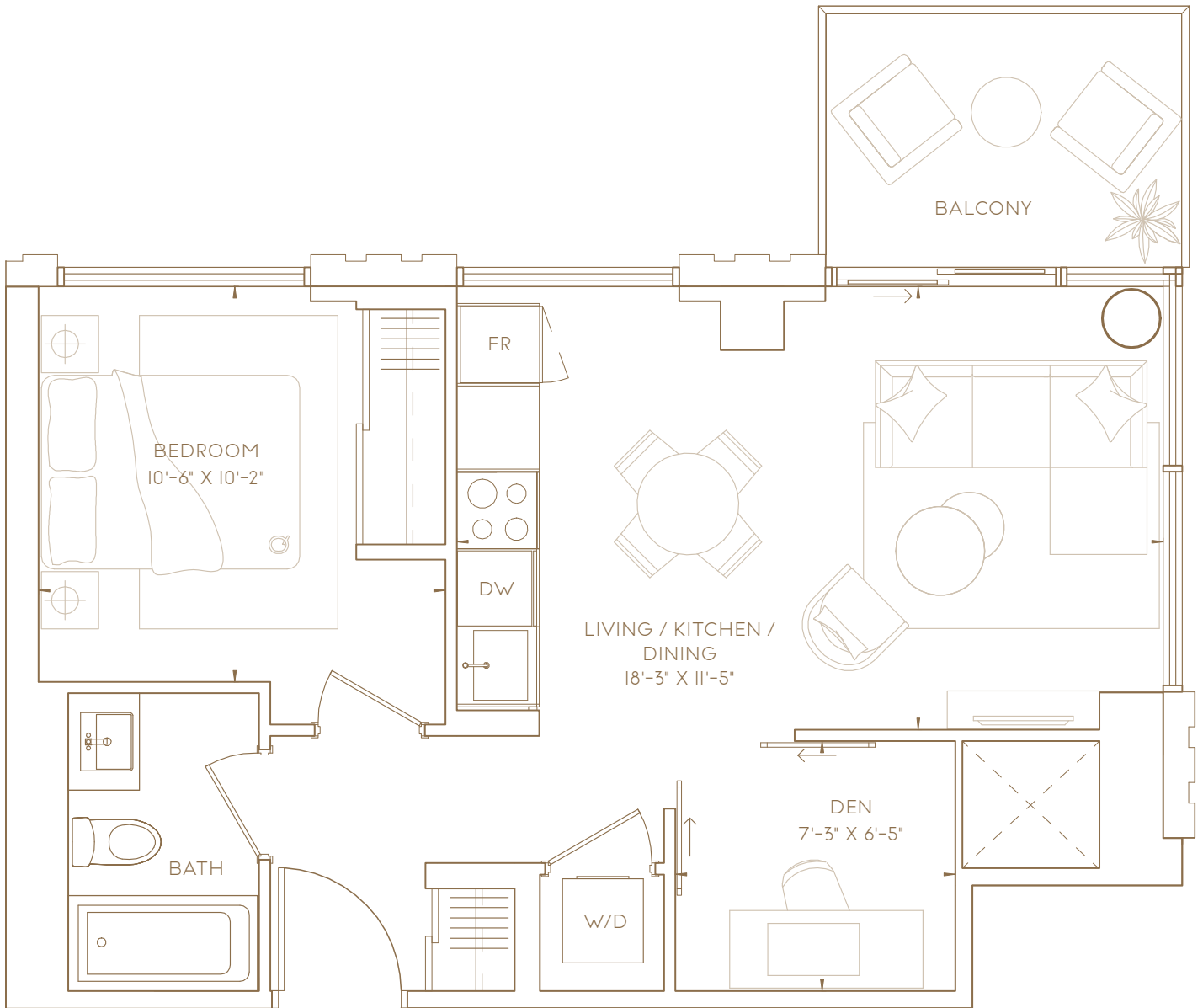
SOUTH  
FOREST  
HILL  
RESIDENCES

1 BEDROOM + DEN

INTERIOR LIVING AREA 555 SF

OUTDOOR LIVING AREA 61 SF

**TOTAL LIVING AREA 616 SF**



WEST TOWER | LEVEL 9



shown for display purposes only and location, size and design of such are subject to change without notice. Floor levels correspond to the proposed municipal levels and do not include levels 4, 13, 14, 24. Actual unit and/or balcony and/or terrace may be a reverse mirror image of the plan presented. Units may include bulkheads, angled windows and/or angled columns. The location, size and type of windows, view treatments (including frit patterning, mullion/metal panel placement or other visual treatments) and exterior building elements may vary without notice. Suites are sold unfurnished. All illustrations are artist concept only, E. & O.E.





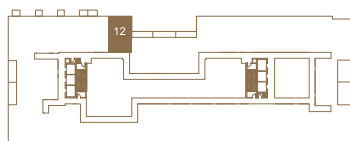
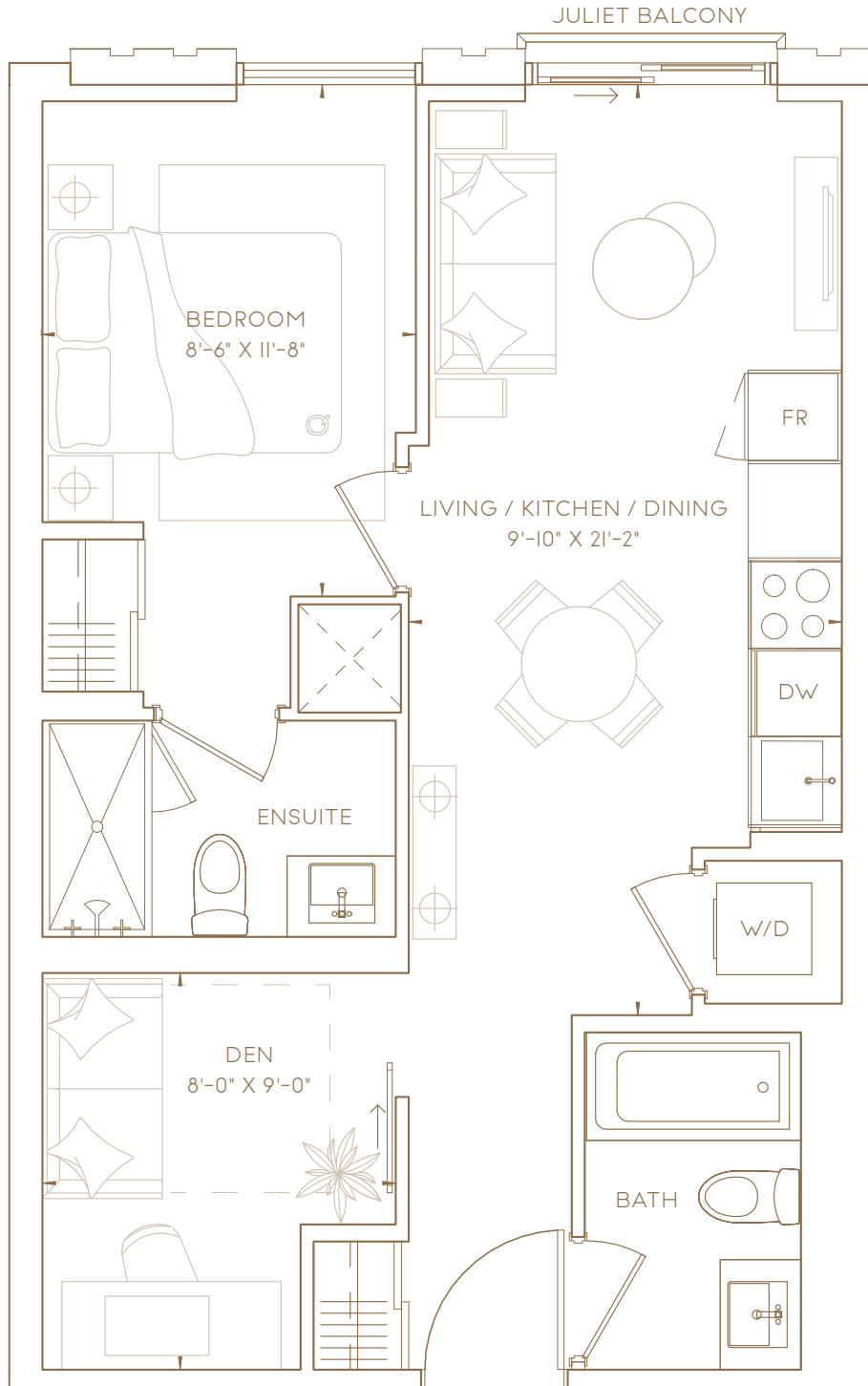
SIGNATURE COLLECTION

# FOREST HILL 600

S O U T H  
F O R E S T  
H I L L  
R E S I D E N C E S

1 BEDROOM + DEN

**TOTAL LIVING AREA 600 SF**



LOWER TOWER | LEVEL 3

This plan is not to scale and is subject to architectural review and revision. All details are approximate and subject to change without notice in order to comply with building site conditions and municipal, structural, architectural and/or Vendor requirements. Balconies and/or terraces, if any, are exclusive use common elements shown for display purposes only and location, size and design of such are subject to change without notice. Floor levels correspond to the proposed municipal levels and do not include levels 4, 13, 14, 24. Actual unit and/or balcony and/or terrace may be a reverse mirror image of the plan presented. Units may include bulkheads, angled windows and/or angled columns. The location, size and type of windows, view treatments (including frit patterning, mullion/metal panel placement or other visual treatments) and exterior building elements may vary without notice. Suites are sold unfurnished. All illustrations are artist concept only. E. & O.E.



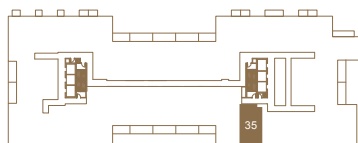
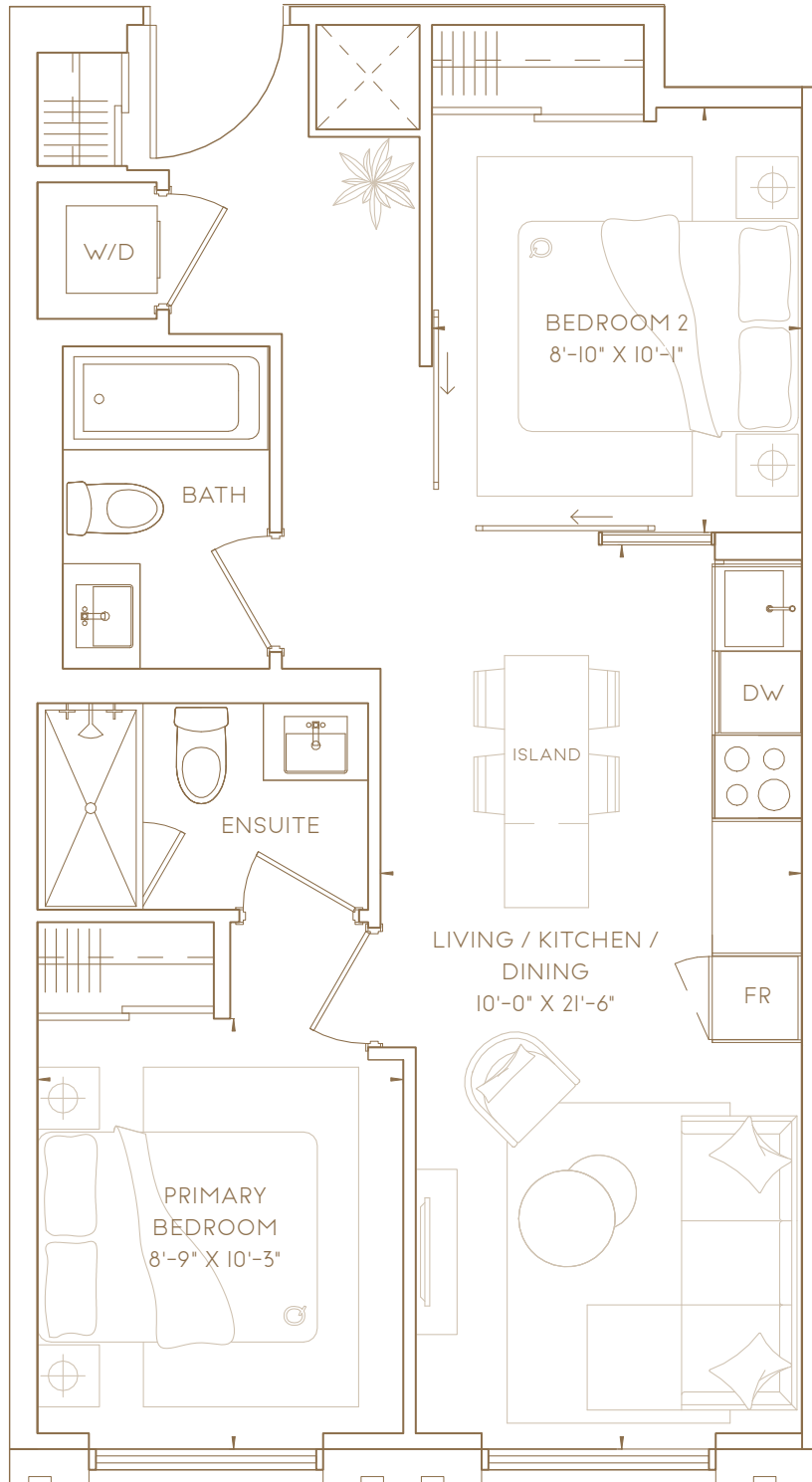
SIGNATURE COLLECTION

# DUNVEGAN 656

S O U T H  
F O R E S T  
H I L L  
R E S I D E N C E S

2 BEDROOM

TOTAL LIVING AREA 656 SF



LOWER TOWER | LEVEL 5-7



This plan is not to scale and is subject to architectural review and revision. All details are approximate and subject to change without notice in order to comply with building site conditions and municipal, structural, architectural and/or Vendor requirements. Balconies and/or terraces, if any, are exclusive use common elements shown for display purposes only and location, size and design of such are subject to change without notice. Floor levels correspond to the proposed municipal levels and do not include levels 4,13,14,24. Actual unit and/or balcony and/or terrace may be a reverse mirror image of the plan presented. Units may include bulkheads, angled windows and/or angled columns. The location, size and type of windows, view treatments (including frit patterning, mullion/metal panel placement or other visual treatments) and exterior building elements may vary without notice. Suites are sold unfurnished. All illustrations are artist concept only, E. & O.E.



SIGNATURE COLLECTION

# DUNVEGAN 737

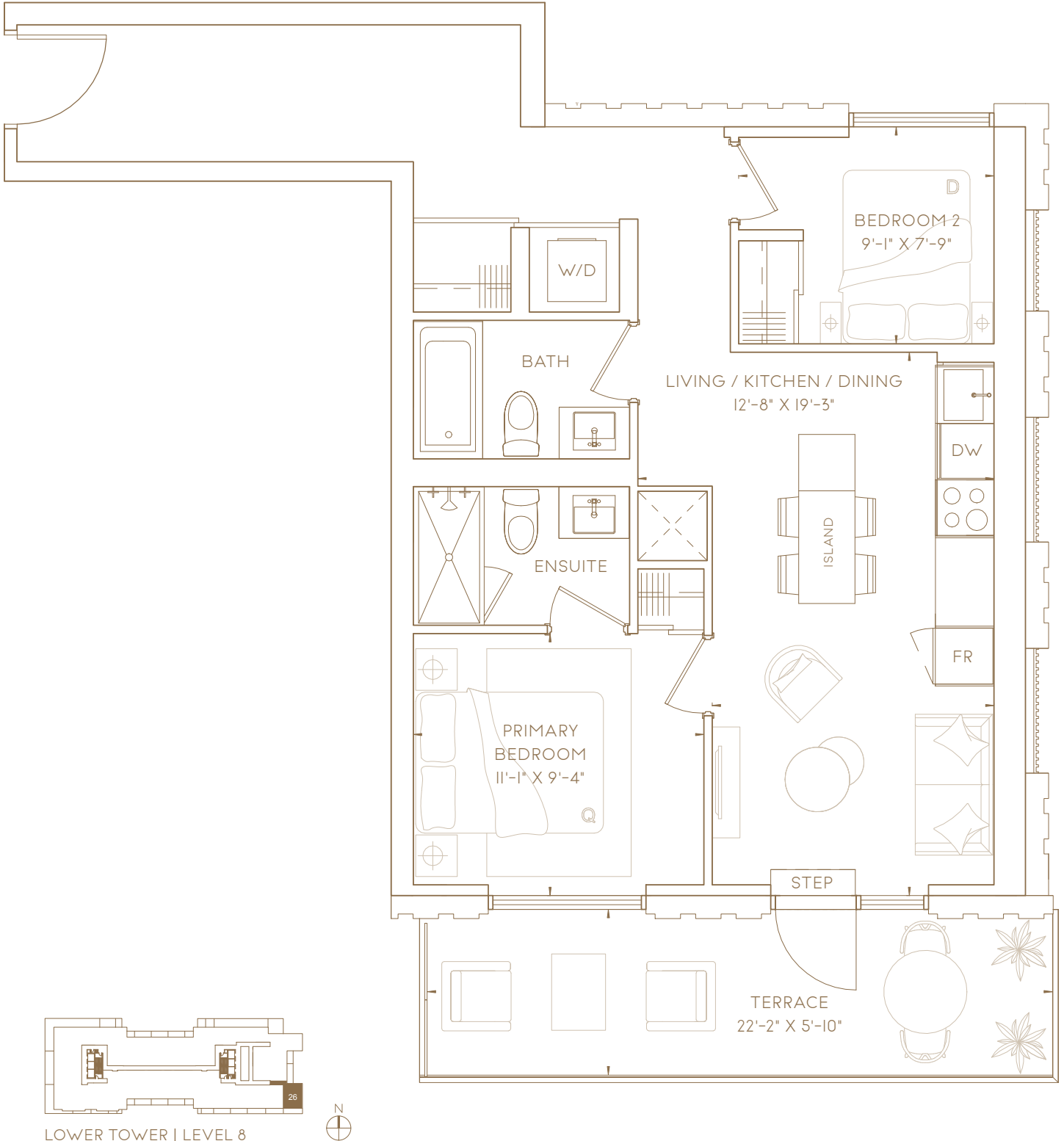
SOUTH  
FOREST  
HILL  
RESIDENCES

2 BEDROOM

INTERIOR LIVING AREA 737 SF

OUTDOOR LIVING AREA 130 SF

**TOTAL LIVING AREA 867 SF**



This plan is not to scale and is subject to architectural review and revision. All details are approximate and subject to change without notice in order to comply with building site conditions and municipal, structural, architectural and/or Vendor requirements. Balconies and/or terraces, if any, are exclusive use common elements shown for display purposes only and location, size and design of such are subject to change without notice. Floor levels correspond to the proposed municipal levels and do not include levels 4,13,14,24. Actual unit and/or balcony and/or terrace may be a reverse mirror image of the plan presented. Units may include bulkheads, angled windows and/or angled columns. The location, size and type of windows, view treatments (including frit patterning, mullion/metal panel placement or other visual treatments) and exterior building elements may vary without notice. Suites are sold unfurnished. All illustrations are artist concept only. E. & O.E.

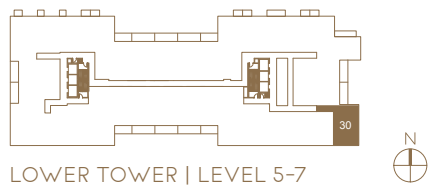
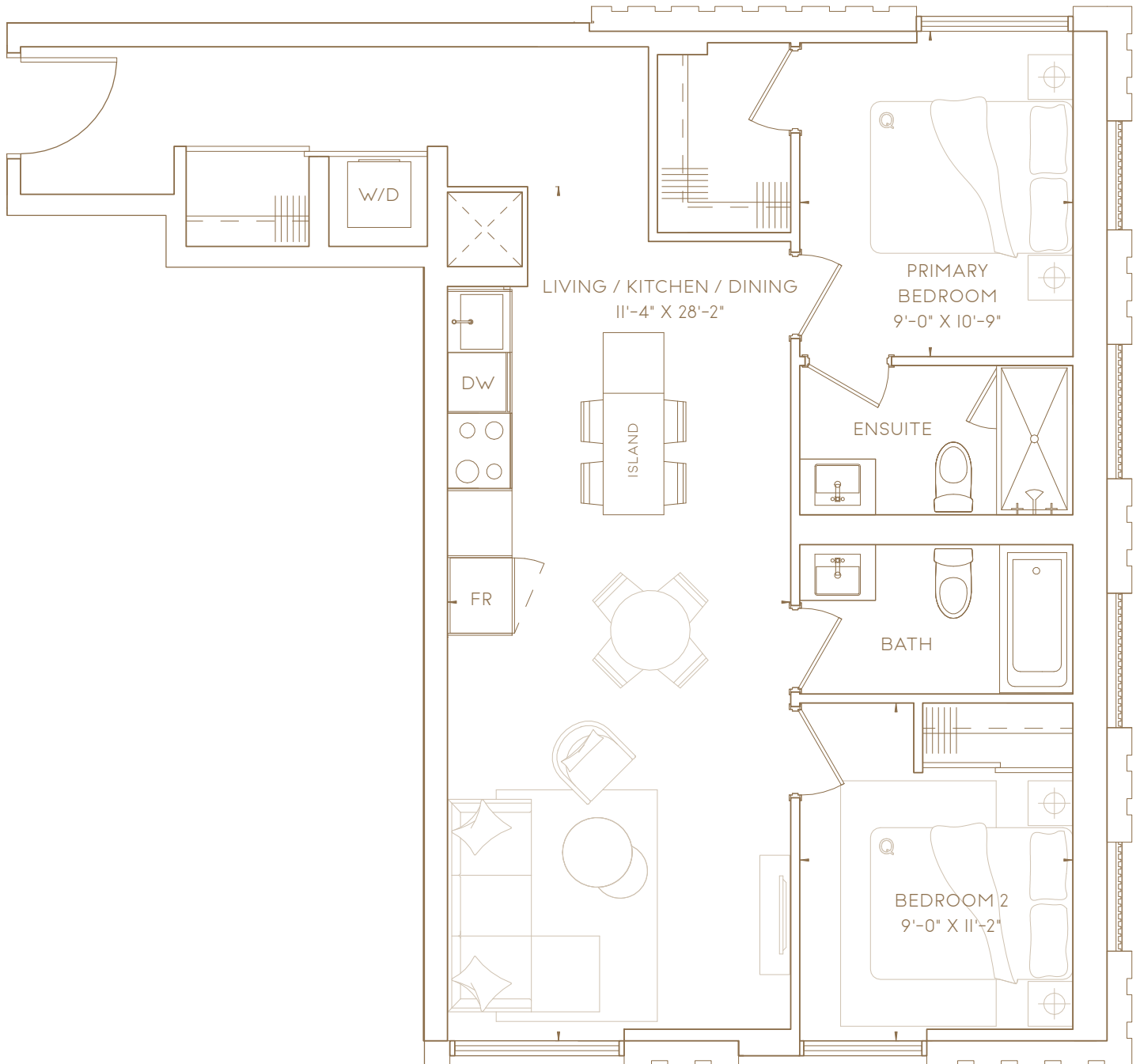


# DUNVEGAN 867

SOUTH  
FOREST  
HILL  
RESIDENCES

2 BEDROOM

TOTAL LIVING AREA 867 SF



This plan is not to scale and is subject to architectural review and revision. All details are approximate and subject to change without notice in order to comply with building site conditions and municipal, structural, architectural and/or Vendor requirements. Balconies and/or terraces, if any, are exclusive use common elements shown for display purposes only and location, size and design of such are subject to change without notice. Floor levels correspond to the proposed municipal levels and do not include levels 4, 13, 14, 24. Actual unit and/or balcony and/or terrace may be a reverse mirror image of the plan presented. Units may include bulkheads, angled windows and/or angled columns. The location, size and type of windows, view treatments (including frit patterning, mullion/metal panel placement or other visual treatments) and exterior building elements may vary without notice. Suites are sold unfurnished. All illustrations are artist concept only. E. & O.E.